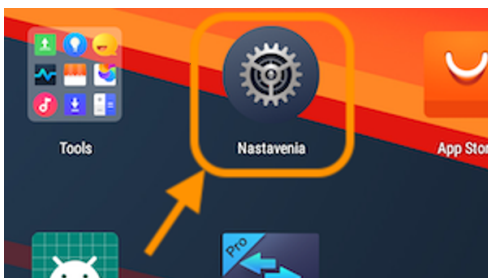


SCANNER USB 2D



Nastavenie SUNMI T2 pre prácu so scannerom

Následujúci postup je určený pre aktiváciu vysielanie (Broadcast) reťazcov z USB scannera Sunmi do Aktivít aplikácií pre Android



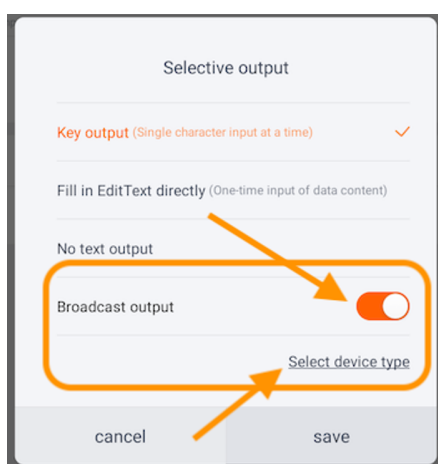
Zvoľte ikonu pre nastavenia systému



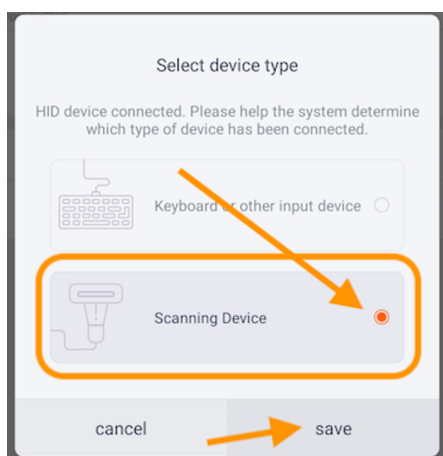
V menu vyberte *Systém* → *Scan code and keyboard*



Kliknite na *Scanning Device*



Aktivujte *Broadcast output* a kliknite na *Select device type*



Prepnite na *Scanning Device* a kliknite na *Save*

Iné odkazy:

- [SUNMI Developers portal](#)

Revision #4

Created 22 July 2024 12:07:31 by Attila Jančík

Updated 28 October 2024 13:21:36 by Attila Jančík